

Specifications:

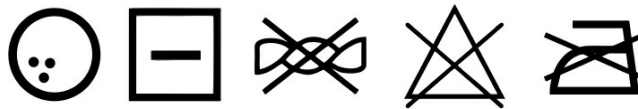
- battery: 2400mAh (8,88Wh); Li-Poly
- built-in energy gauge
- heating element: 2.2W - carbon fiber
- the heating element is located at the front of the insole
- modes: 33% (LO), 66% (MED), 100% (HI)
- working time: 10h (LO), 6h (MED), 3h (HI)
- fabric: 95% EVA, 5% velvet
- charger: USB; 5V, 1A
- sizes: M, L
- weight with battery: 220g
- convenient case included in the set

Features:

- The heating element is constructed from carbon fibres offering extraordinary reliability and durability as well as medical properties, thanks to infrared waves
- A safe and economic Li-Poly battery provides a long time of operation of the heating system
- The heating element is located at the front of the insert, thanks to which the heat is evenly distributed all around your foot
- The insert may be adjusted to the foot size between 35-40 or 41-46
- The set contains a remote control, thanks to which the comfort of using the inserts is extraordinary

Cleaning and maintenance

The heating element used in is resistant to moisture. However, strong laundry detergent can cause mechanical damage of the heating element . Therefore, we recommend surface cleaning with a cloth or brush with a small amount of detergent and gentle rinsing . If you need a more powerful washing, tightly wrap the end of the power cord. Do not clean with battery connected to them !



Important:

Before first use, fully charge the battery.

If the battery is stored for long periods without use, it should be fully charged before storage and charging should be repeated every 3 months.

If there is mechanical damage to any items, immediately turn off the device and remove the battery . The defective part must be sent to the service for repair or replacement .

**RoHS
Compliant**



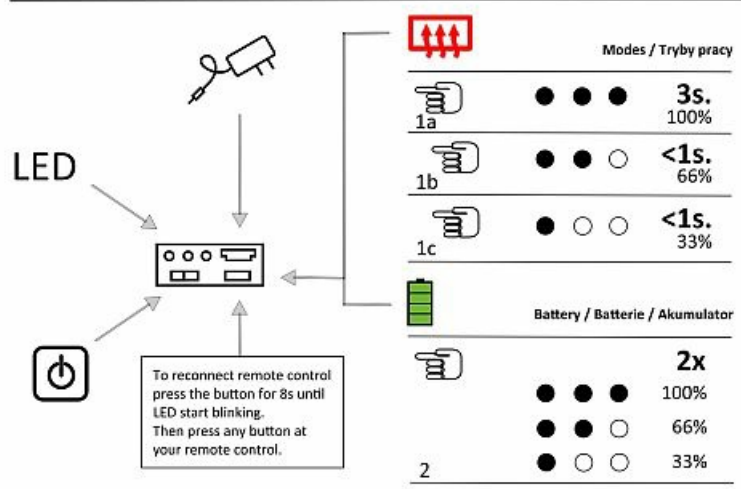
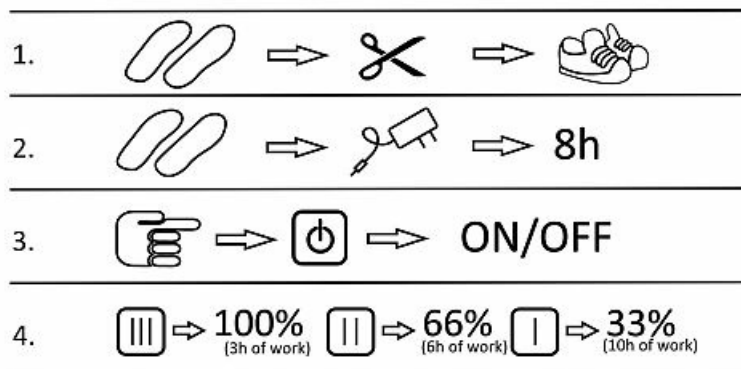
USER MANUAL

Charging the internal battery

Connect batteries to the charger socket and then plug the charger to the electricity outlet. Charging time is approximately 5-6 hours.

Turning on and operation

Each time before turning on, make sure that the built-in connection cable is not mechanically damaged. Also make sure that the connected battery is free of mechanical damage. Connect the battery to the built-in cable. Place the battery in your pocket and zip it up. To start the heating press and hold the POWER button for 2 seconds. Device will turn on with the heating power at 100%. Another short press of the POWER button toggles the heating power to 66%, 33% and again 100%, which is indicated by lighting corresponding LED lights. To turn off the heat press and hold the POWER button



Warning: Turn off insoles when not in use. Fully charge the battery every 3-6 months.
 Warnung: Schalten Sie Einlegesohlen, wenn Sie sie nicht benutzen. Laden Sie den Akku alle 3-6 Monate.
 Uwaga: Wyłącz wkładki gdy ich nie używasz. Naładuj do pełna baterię co 3-6 miesięcy.
 Attention: Éteignez semelles lorsque vous ne l'utilisez pas. Charger complètement la batterie tous les 3-6 mois.